

Table of Contents

Special Dec. Events	1 & 2
Wellness / Fitness	3
Crafts & Joyful Giving	4
Cards and Games	5
Clubs and Services	6
Books, Movies	7
Monthly Calendar	8
Lunch Menu & Christmas	9 & 10
2012 Membership Form	11
Sponsors & Supporters	7 & 12
Travel	13



December Celebrations

December Birthday Lunch

Tuesday, December 6 at noon

Join us as we celebrate December birthdays with a delicious lunch and cake. Stay and enjoy a viewing of the Chelsea Community History Project's production about local farm families in Chelsea. Lunch, friendship, and a taste of Chelsea history!

Community Christmas Lunch and Celebration

Monday, Dec. 19 at noon Cost: \$5 suggested donation

A wonderful way to meet other seniors and celebrate the holidays. Please join us for a special lunch followed by a group sing of your favorite Christmas carols led by Angelo Angelocci and Jack Merkel, accompanied by Kathy West. This celebration is made possible through the support of our sponsors, the Cole and Mitchell families, and the Chelsea School District. Please call 475-9242 by Dec. 9 to make your reservation.

Christmas Cookie Exchange

Tuesday, December 20 at 11 a.m.

Sharing is an easy way to enjoy a variety of holiday goodies. Bring your favorite holiday cookie and leave with several different kinds of treats. We invite each participant to bring **4 (four) dozen** of the same cookie (or candy) plus an empty container to carry home a variety of homemade cookies. Bring along your special recipe as well. Please let us know you will be joining us, just call ahead—475-9242.



Special December Events

Holiday Songs from the Cinema!

Friday evening, Dec. 2 at 6:00 p.m. Cost: \$35

Saturday matinee, Dec. 3 at 1:00 p.m. Cost: \$20

Come join us for a wonderful holiday musical celebration and support our last fundraiser for the year! This spectacular performance of holiday songs from the cinema features a talented cast of performers from the Washtenaw County area, including students from the Chelsea Center for the Arts and the Chelsea Beach Middle School Fiddle Club. This year's show will feature music from motion pictures with holiday themes.... White Christmas, Meet Me in St. Louis, Home Alone and many others, and will be produced and directed by Heather Dove Tumbow. Silent auction and raffle. Tickets available at Chelsea Senior Center and Chelsea Pharmacy.

Holiday Centerpieces

Thursday, Dec. 8 @ 10 a.m. - 12 p.m.

Janice Stevenson from Wackenhut Gartens is back with another beautiful centerpiece project. This month, join her for a class on making your own fresh wreath for the holidays. Class fee includes all materials; \$20 members, \$23 non-members .



Learning Opportunities

Legal Link

Thursday, December 15 at 9:00 a.m. FREE

A monthly presentation and question and answer club about topics of interest to seniors and their families. Do you have a legal question? Local attorney Patrick Conlin will introduce this new monthly series that will provide seniors and their families a forum to have their questions answered. Each month features a different topic and speaker on legal, finance, and tax issues. Information, peace of mind, and refreshments provided.

Legislative Update with Mark Ouimet

Friday, December 16 at 9:00 a.m. FREE

Join us for coffee and donuts with State Representative Mark Ouimet. Bring your questions and hear what's being discussed in Lansing.

A Message from our Director....

During the holidays, we are encouraging all of our members to reach out and connect with other seniors. If you know a friend or neighbor who may need a friendly phone call, a visit, or other support, please let us know. We are here to serve and support all seniors in Chelsea!

For 2012, our goals as an organization are to build our membership and increase our community outreach. Each and every member can help us by spreading the word about our wonderful organization; bringing a friend to lunch, exercise, or a program; and volunteering your time and talent to the many FUNraisers we have planned for the next year. We need you!

As this year winds down, I will be taking a trip with my family back to Vietnam. This will be a life journey for all of us and I look forward to sharing our experiences with you in the New Year. Wishing all of you and your loved ones, a blessed holiday filled with joy, peace, and happiness!

~ Trinh



Events on the Horizon

Celebrate Chinese/Lunar New Year

Monday, January 23 at 9:00 a.m. FREE

It's the Year of the Dragon! Come hear about the traditions of the Lunar New Year celebrated all over Asia. Trinh will share pictures and stories of her travels through Vietnam. Refreshments will be served.

Tax Prep Assistance

Thursdays, February 23, March 8 & March 22

Catholic Social Service volunteers will be available to help low income seniors with simple tax returns. Please call the Center at 475-9242 to schedule your appointment between 9:00 and 12 noon.

Adult Learner's Institute Winter/Spring offering

The Adult Learners Institute (ALI) provides a diverse selection of quality community-based learning experiences and camaraderie for adults in western Washtenaw County. Registration for the Winter/Spring semester starts January 11. Course catalogs can be picked up at the Senior Center or at www.adultlearnersinstitute.org.

Thank You to our Board of Directors and Volunteers!

Chelsea Senior Center's active, volunteer Board of Directors are responsible for the direction of the Center. We thank all of this dedicated group. On behalf of the entire membership a special thank you to retiring Board members Yvonne Johnson, John Bohlender, Tony Dickerson, and Ed Riske for their many years of service and dedication to the Center. We are delighted that they have promised to stay involved with Chelsea Seniors. If you've considered a position as a Board member, please feel free to contact Trinh or Kay.

Also, thank you to our wonderful volunteers for your dedication during 2011. The willingness of dozens of individuals keeps the Center running smoothly. The Center could not succeed without your dedication to supporting the office, events, fundraisers, travel, and programs. Thank you for all you do every day, and for your wonderful welcoming smiles!

Community Events

Kaleidoscope Concert Series

Tuesday, December 20 at 7:00 p.m. FREE

Silver Maples

Now in its 27th season, the Detroit Chamber Winds and Strings brings to life a large and wonderful repertoire with an ensemble of musicians drawn primarily from the Detroit Symphony and Michigan Opera Theater Orchestras.

Senior Supper Club

Tuesday, January 10 Cost \$6

4 p.m. Program / 5 p.m. Dinner

Chelsea Community Hospital Cafeteria

Join Kim Campbell, RN and Anita Repp, MD to learn the most up to date information about Diabetes and meet Chelsea's first Endocrinologist.

Out to Lunch Bunch

Thursday, December 15 at noon

Join this fun group for lunch at Seitz Tavern on Middle Street in downtown Chelsea.

Call the Center at 475-9242 so we can make reservations for the group.



Wellness for all

Enhance Fitness

Mondays, Wednesdays, and Fridays, 10:30 - 11:30 a.m.
Cost: \$3 drop-in/class or \$22 for an 8-session card

This class focuses on stretching, flexibility, balance, low impact aerobics, and strength training exercises needed to maintain strength and function. Bring a friend to this evidence based fitness class; their first time is free.

Ping Pong

Mondays, 1:00 p.m.

Join us for a fun afternoon of exercise and friendly competition. Come learn how to play or fine tune your skills.

Equipment provided or bring your own lucky paddle.



Swimming at Chelsea Comfort Inn

Tuesdays and Thursdays, 9:00 - 10:00 a.m.

Cost: \$3 per person per session

Come join us for swimming, water walking, or soaking in the hot tub at the Chelsea Comfort Inn. Water exercise is great for people with balance concerns, arthritis, and joint problems—all are welcome. The pool is a warm water pool with a depth of 5ft. Please remember, though, there is no lifeguard on duty, and you should swim at your own risk. Payment will be accepted at the front desk of the Comfort Inn on a drop-in basis.



Bowling at Chelsea Lanes

Wednesdays, 1:00 p.m.

Join our regular bowlers for fun and exercise at Chelsea Lanes. For more information, please contact the Lanes at 475-8141 and ask to speak with Kathy GreenLeaf.

Walking Move More with Chelsea Seniors!

Come any day to walk the halls or Chelsea School District's track (when it is not in use). Ask us about the 10,000 steps challenge and a free pedometer to use!

MEMBERSHIP DRIVE: It's that time of year to renew your annual membership! Your membership helps to support our operational costs so that we can continue to provide the quality programs and services that we all enjoy. Please help us save additional printing and mailing costs by sending in your completed membership forms today!

Don't Forget!

New Year's Celebration Potluck

Friday, December 30 at noon

Potlucks can be so much fun! Bring a dish to pass or, if you prefer not to cook, \$3 towards chicken for the group. Is December 30th the time to start cooking healthy meals for the new year OR to indulge in all our favorite holiday recipes? The choice is yours! Please leave a message at 475-9242 to let us know you're coming.

After lunch we'll share favorite New Year's traditions. Be prepared to tell us about a special food you eat on New Year's Day or football game you watch or a New Year blessing. We'll also share any New Year's Resolutions you may be making.

AND Trinh promises we'll have an email to read from Vietnam telling all about her adventure!



Help Support the Senior Center

Condo for Rent

Great getaway for the holidays! The Senior Center has a condo available for rent in Branson, Missouri. Only 12 hours from Chelsea through scenic Ozark country, you can enjoy popular shows and family friendly entertainment. The fully furnished condo sleeps 8 and can accommodate two families in separate quarters. Please contact the Center for more information.

Chelsea Senior Center Wish List :

- ◆ Regular and decaf coffee
- ◆ Coffee cups
- ◆ Paper towels
- ◆ Gift Cards to Meijer or Target for snacks
- ◆ Colored copy paper — ream each color preferred

Chelsea Senior Center Craft Corner
Have you noticed the beautifully made crafts on display in the main office? These are all made by our various craft groups and talented members as an ongoing fundraiser for the Senior Center. Make a donation to the Senior Center and take home a handmade birdhouse or knit blanket, which make wonderful gifts!

Arts and Crafts

Paint with Steve Wood

No Class in December!

Steve is taking a break for December, but join him for a fun creative afternoon in January 2012!

Craft Group

Tuesdays, 10 a.m.

Free for members / \$1 non-members

Each week, bring your own project or join us to make crafts for special events. Materials provided.

Stained Glass Class

Wednesdays, 9:30 - 11:30 a.m.

Cost: \$3 members / \$4 non-members (per session)

Interested in learning stained glass? Everyone is welcome in this informative and personalized stained glass workshop with Harry Gibson. Glass and other supplies available for purchase.



Knit and Crochet

Thursdays, 12:30 p.m.

Free for members / \$1 non-members

Join this group for informal instruction. There's time to socialize while working on projects for those in need.

Wood Carving

Fridays, 10 a.m.

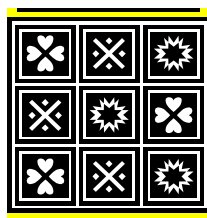
Free for members / \$1 non-members

Each week the wood carvers meet to work on their projects and share new ideas. Those new to wood carving are welcome to join this growing group.

The Strippers Quilting Group

Friday, Dec 9th at 11:30 a.m.

Come share laughter and your love of quilting with this friendly group. Join us on December 9th for a Christmas Potluck.



Charity Quilting

Tuesdays, 1:00 – 3:30 p.m.

This ambitious group has distributed a number of beautiful quilts to local charities. Join them as they continue to turn scraps into heirlooms. A variety of skills needed.

For Joyful Givers . . .

Intergenerational Volunteer Opportunities - UPDATE

We have had some wonderful intergenerational volunteer interactions this fall. Several members from our sewing and knitting groups have donated their time and talent to make costumes, hats, and gloves for the pre-schools in town. We are lucky to have such talented and generous individuals at the Center! Also, some high school students have donated their time to help us with our Enhance Fitness checks and our recent Something Old, Something New sale. These opportunities showcase the collaborative spirit of our community!

Chelsea Senior Center Endowment Fund:

It's not too late to benefit from the MI state tax credit!

The current MI state tax credit for donation to community foundations will expire after Dec. 31, 2011. This is a wonderful way to support the long term viability of our mission AND receive a tax credit for your generosity. For more information, please call Trinh or Kay at 734-475-9242.

for your
generosity,
please take some credit.

Help ensure the future of the Chelsea Senior Center by contributing to our endowment fund at the Community Foundation for Southeast Michigan. State law entitles you to a tax credit of 50 percent of the amount you contribute, subject to certain limits. Just write a check payable to the Community Foundation for Southeast Michigan, indicate the Chelsea Senior Center Endowment Fund in the "memo" line, and mail by December 31 to:

Community Foundation
for Southeast Michigan
333 W. Fort St., Suite 2010
Detroit, MI 48226-3134

For more information on the Michigan tax credit, call 734.475.9242.

in partnership with

communityfoundation

FOR SOUTHEAST MICHIGAN
www.cfsem.org

Connecting those who care
with causes that matter.

Cards and Games

Join one of these groups for fun and friendship! Free for Senior Center members and non-members pay \$1.

Bingo

Mondays and Fridays, 9 a.m.

Everyone is welcome to our Bingo. Drop in Monday or Friday morning for fun and fellowship.

Hand and Foot

Mondays, 12:30 p.m.

Join us for this fun Canasta style game. No experience needed.

Mah Jongg

Tuesdays and Fridays, 9:30 a.m.

Mah Jongg is fun, easy to learn, and challenging all at the same time. If you've never played, our dedicated players will assist as you enjoy this exciting tile game.

Wii Fun!

Tuesdays and Fridays, 1 p.m.

Wii is an interactive video game that is simple and fun. We welcome everyone, no experience necessary.

Pinochle

Wednesdays, 1 p.m.

Pinochle players wanted. We'll help if you're a bit rusty. No partners needed.

Scrabble

Wednesdays, 1 p.m.

Enjoy a fun afternoon with one of the most popular board games. New players always welcome.

Chess

Thursdays, 10 a.m. FREE

Challenge our master chess players or come learn the game. Free, join us for a cup of coffee and exercise your brain.

Euchre

Tuesday nights, 6:30 p.m. Cost: \$3.00 (prizes awarded)

Friendly players, no partners necessary. Bring a snack or other dish for all to enjoy.



Check out this Growing Group!



Cards and Games

Party Bridge Players

Thursdays, 12:15 p.m. Registration; 12:30 Games start
Cost \$3.00

Chelsea Area Bridge Club meets Thursday afternoons. All bridge players are invited to play on a drop-in basis. Invite your friends. We have players from Pinckney, Dexter, Ann Arbor, and beyond. Scoring format is Chicago style. Partners not required.

**Instructional Bridge is back with Arlene Howe!
Please call the Center if you are interested.**

Join Us For Lunch

Taste of Home Café at 12 noon

Call your friends and join us for a wonderful lunch option. You'll discover a balanced meal and great fellowship Monday - Friday at the Taste of Home Café. Thanks to Area Agency on Aging 1B and the Washtenaw County Senior Nutrition Program, diners over 60 pay only \$3.00 (if registered with the Senior Nutrition Program). The public is most welcome, guest cost is \$5.50 per person. Check out the great menu in this newsletter or online and give us a call. We're looking forward to seeing you!

Only \$3.00 for 60+ (\$5.50 for people under 60)

Please call 475-9242 at least 24 hours in advance!

Dec 29th—bring your lunch; Dec 30th—Potluck

Everyone is welcome!

At Chelsea Senior Center we want to be a welcoming place for everyone. Please let us know of any special accommodations you may need. Is lack of transportation and rising gas prices preventing you from coming to the Center? Please call us and we can help you find a ride.



Come see us in confidentiality

If finances are keeping you from joining the Center or attending a program, we can help through the generosity of an anonymous donor. If you are interested in receiving a scholarship, please see Trinh. All scholarship information and financial needs are kept confidential.

Telephone Reassurance Program We are looking for Seniors who might benefit from a cheery phone call on a regular basis. Tell us when and how frequently. Please pass the word about this service.

Clubs and Groups

Join one of these groups for time to socialize and learn something new. All are welcome! Senior Center members attend for free and non-members pay \$1.

Men’s Barbershop Quartet

Ever had a hankering for singing in a barbershop quartet? Do you enjoy singing? If you answered “Yes”, call the Center and sign up for this new group! You don’t have to read music, but you should be able to carry a tune. Date and time to be determined based on level of interest.



Computer Club

Thursdays, 10 - 11:30 a.m.

Join this lively group as they explore new technologies as well as fun and helpful information on the internet. This club is great for all computer users - beginners to more advanced. Bring information, comments, and questions to share with the group round robin style. Come prepared to learn as well as enjoy socializing with a great group of seniors.

Coin Collecting Club

Third Wednesday of the month, 10 a.m.

Bring American or foreign coins. No experience necessary - come as we learn from each other.

“All Write” Writing Group

December 5 and 19 at 1:00 p.m.

Novice writers are invited to drop in the first or third Monday of the month to join this welcoming group. Come prepared to share your creative writing!

Newsletter Assembly Group

Thursday, December 22 at 9:00 a.m.

Join this dedicated (and fun) group as we collate, secure and label each newsletter. You’ll enjoy the great conversation as the time flies.

Red Hatters

The Scarlett Ladies

Tuesday, December 13 at 1:00 p.m.

Meet at the Common Grill for lunch and a gift exchange. Call Babette at 475-0715 for information.



Services for Members

Support, Questions Answered, Resources The Chelsea Senior Center is the place for answers. We look forward to sharing our file of resources and lists of services for Seniors. Just give us a call, we are happy to help.

Medicare/Medicaid Assistance Program (MMAP)

Trained certified counselors are available by appointment to help you navigate the system to obtain health care benefits. Call 475-9242 if you need help!

**Open Enrollment
Oct. 15 - Dec. 7**

Computer Workstations

Do you need to check email, find something on the internet, or use a computer, but don’t have access to one at home? There are 2 workstations available at the Center you can use for free, just stop in and ask us!

Books and Magazines

Our lovely library of donated magazines, hardcover and paperback books are available for members to take home and enjoy or to share with seniors who are shut-ins. Many large print.

Sewing, Mending and Repairs

A service for members; a donation to the Senior Center requested. Bring matching thread if possible.

Blood Pressure

10 a.m. to noon on the first and third Tuesday of the month. Do you know your numbers? Thanks Barb and Karin for keeping us healthy.

Massage with Dawne By popular request, you can now enjoy Dawne’s massages **twice a month!** Still just \$1

per minute: you can schedule your chair massage on Mondays, December 5 and 19. Dawne will be here from 10 a.m. to 1 p.m.; call us to schedule your appointment—475-9242.

Foot Care

Ava will be on temporary leave of absence Dec. thru Feb. 2012 for hand surgery. All Dec, Jan, and Feb appointments are cancelled. Ava will be contacting all her patients on an individual basis. She hopes to return in March & will keep us all informed of her progress. Call Ava at (734) 878-7330 if you need to re-schedule an appointment.

Reflexology

Growing in popularity, reflexology offers a relaxing retreat from the stresses of the world giving the body an opportunity to use its own healing abilities. Sign up for this great therapy on December 13. Each 15 minute session cost \$10 members; \$15 non-members. Please call the Center to sign-up.



Movies at the Center

Classical musicals continue by popular demand! Come for popcorn, fellowship and great theater. Movies start at 12:30 p.m. Donations accepted.

Friday, Dec. 2: Hello Dolly 146 min 1969
Dolly Levi weaves a web of romantic complications but eventually, everything is sorted out.

Friday, Dec. 9: Royal Wedding 93 min 1951
Fred Astaire and Jane Powell are brother and sister, who are asked to perform as a dance team in England at the time of Princess Elizabeth's wedding.

Friday, Dec. 16: My Fair Lady 170 min 1964
A professor agrees to a wager that he can make a flower girl presentable in high society.

Friday, Dec. 23: White Christmas 120 min 1954
This holiday classic tells a musical story about a pair of veterans who join forces with singing sisters to help save their former army general's Vermont inn

Great Books Discussions With Chelsea District Library

Rabbit, Run by John Updike
Friday, December 2 at 1 p.m.

Harry Angstrom was a high school basketball star and it was the best time of his life. Now in his mid-20s, his work is unfulfilling, his marriage is waning, and he tries to find happiness with another woman. But happiness is elusive, and Harry continues to run from his wife, his life, from himself and in search of something more.

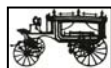
Red Badge of Courage by Stephen Crane
Friday, January 6 at 1 p.m.

This classic story about a young soldier during the American Civil War examines the conflict as an external force, represented by the battle, and as internal struggles, represented by the emotion and pressure experienced by the young men on the battlefield.



Our Sponsors...

Staffan - Mitchell
FUNERAL HOME



*Pre-planning, Monuments, Green Burial,
Traditional and Cremation Services*

John W. Mitchell II, Owner, Director
Michael D. Mitchell, Owner, Manager

Service First Home Care
Non-medical Home Assistance



Assistance with Activities of Daily Living:

- Light Housekeeping
- Shopping/Errands
- Medication Reminders
- Transportation Services
- Meal Preparation
- Companionship
- Bathing/Grooming
- Memory Care



Maggie Roberts, MA, LPC 734-323-4434
Anji Barbour, BA, CNA 734-747-1841

www.servicefirsthomecare.com



CHELSEA COMMUNITY HOSPITAL

SAINT JOSEPH MERCY HEALTH SYSTEM

Unique In
Every Way

Senior Emergency Department™

stjoeshealth.org



Funeral Chapel

Allen C. Cole
Owner/Manager

Donald A. Cole
Funeral Director

214 E. Middle St.
Chelsea, Michigan 48118
Phone: (734) 475-1551

www.colefuneralchapel.com

JOHN A. McDERMOTT
Attorney at Law

310 N. Main Street Suite 130
Chelsea, MI 48118

Phone (734) 433-9490
Fax (734) 433-9349

www.McDermottelderlaw.com

Member: National Academy Elder Law Attorneys
Email: jamcd@comcast.net

December 2011

Chelsea Senior

MONDAY

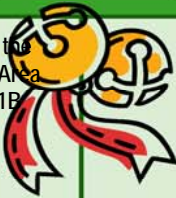
TUESDAY

WEDNESDAY

THURSDAY

FRIDAY

Supported through the
Washtenaw County Area
Agency on Aging 1B



5 Sour Cream Beef Stroganoff
Seasoned Egg Noodles
Honey Glazed Carrots
Fruit and Salad
Dessert of the Day

Birthday Celebration

6 Savory Pork Chop
Mushroom Gravy
Whipped Potatoes
Seasoned Green Beans
Fruit and Salad
Dessert of the Day

7 Grilled Quarter Pound Burger on a Toasted Bun
Assorted Condiments
Potato Salad
Buttered Corn
Fruit and Salad
Dessert of the Day

1 Hearty Beef Stew
w/ Mixed Vegetables
Fruit and Salad
Dessert of the Day

2 Grilled Ruben Sandwich
on Rye Bread
Italian Pasta Salad
Fruit and Salad
Dessert of the Day

12 Flavorful Chicken Pot Pie
Creamy Mashed Potatoes
with Homestyle Chicken
Gravy
Steamed Peas & Carrots
Fruit and Salad
Dessert of the Day

13 Beef Pasty w/Gravy
Steamed Cauliflower
Fruit and Salad
Dessert of the Day

14 Roast Turkey & Gravy
Whipped Potatoes
Seasoned Green Beans
Chilled Cranberry Sauce
Fruit and Salad
Dessert of the Day

15 Homebaked Italian
Lasagna
Broccoli with Parmesan
Crunchy Garlic Toast
Fruit and Salad
Dessert of the Day

16 Crunchy Fish and Chips
Tartar Sauce
Steamed Mixed
Vegetables
Fruit and Salad
Dessert of the Day

19 Holiday Dinner
Ham
White Cheddar Cheesy Potatoes
Roasted Seasoned Asparagus
Traverse City Salad
Whole Grain Roll and Butter
Dessert

20 BBQ Pork on a
Bakery Bun
Sweet Potato Fries
Fruit and Salad
Dessert of the Day

21 Ballpark Beef Frank
On Steamed Bun
Brown Sugar Baked
Beans
Buttered Corn
Fruit and Salad
Dessert of the Day

22 Beef and Tomato
Goulash
Glazed Carrots
Warm Breadstick
Fruit and Salad
Dessert of the Day

23 Oven Fried Chicken
and All the Fixins
Fruit and Salad
Warm Fruit Cobbler

26
No Lunch

27
No Lunch

28
No Lunch

29
No Lunch

30
No Lunch



News


Turkey with cheese on wheat
or white bread.
Chef Salad
Please try our new salads
California Cobb
Caesar
Mandarin Chicken
Are also available

**For reservations please call
475-9242 at least one day in
advance**

Thank you

Have a Wonderful
Holiday Season!!



Monday	Tuesday	Wednesday	Thursday	Friday
 <h1>December 2011</h1>		<p>* Indicates programs taking place away from Senior Center campus</p>	<p>1</p> <p>9:00 Swimming * 10:00 Computer Club 10:00 Chess 12:15 Bridge 12:30 Knit & Crochet</p>	<p>2 Donny & Marie-Dec. 3</p> <p>9:00 Bingo 9:30 Mah Jongg 10:00 Wood Carving 10:30 Enhance Fitness 12:30 Movie 1:00 Wii Fun 1:00 Book Club</p> <p><u>Holiday Songs from the Cinema</u> Friday 6:00 p.m. Saturday 1:00 p.m.</p>
			<p>5</p> <p>9:00 Bingo 10:00 Massage 10:30 Enhance Fitness 12:30 Hand & Foot 1:00 Ping Pong 1:00 Writing Group</p>	<p>6 BIRTHDAY LUNCH!</p> <p>9:00 Swimming * 9:30 Mah Jongg 10:00 Crafts 10:00 Blood Pressure 12 Noon Birthday Lunch 1:00 Quilting for Charity 1:00 Wii Fun 6:30 Euchre</p>
<p>12</p> <p>9:00 Bingo 10:30 Enhance Fitness 12:30 Hand & Foot 1:00 Ping Pong</p>	<p>13</p> <p>9:00 Swimming * 9:20 Reflexology 9:30 Mah Jongg 10:00 Crafts 1:00 Quilting for Charity 1:00 Wii Fun 6:30 Euchre Red Hatters*</p>	<p>14</p> <p>9:30 Stained Glass 10:00 Coin Collecting 10:30 Enhance Fitness 1:00 Pinochle 1:00 Scrabble 1:00 Bowling League*</p>	<p>15</p> <p>9:00 Swimming * 9:00 Legal Link 10:00 Chess 10:00 Computer Club 12:00 Out to Lunch Bunch 12:15 Bridge 12:30 Knit & Crochet</p>	<p>16</p> <p>9:00 Bingo 9:00 Coffee with Rep Mark Quimet 9:30 Mah Jongg 10:00 Wood Carving 10:30 Enhance Fitness 12:30 Movie 1:00 Wii Fun</p>
<p>19</p> <p>9:00 Bingo 10:00 Massage 10:30 Enhance Fitness 12:00 Community Christmas Feast 12:30 Hand & Foot 1:00 Ping Pong 1:00 Writing Group</p>	<p>20 Kaleidoscope Concert*</p> <p>9:00 Swimming * 9:30 Mah Jongg 10:00 Crafts 10:00 Blood Pressure 11:00 Cookie Exchange 1:00 Quilting for Charity 1:00 Wii Fun 6:30 Euchre</p>	<p>21</p> <p>9:30 Stained Glass 10:30 Enhance Fitness 1:00 Pinochle 1:00 Scrabble 1:00 Bowling League*</p>	<p>22</p> <p>9:00 Newsletter Assembly 9:00 Swimming * 10:00 Chess 10:00 Computer Club 12:15 Bridge 12:30 Knit & Crochet</p>	<p>23</p> <p>9:00 Bingo 9:30 Mah Jongg 10:00 Wood Carving 10:30 Enhance Fitness 12:30 Movie 1:00 Wii Fun</p>
<p>26</p> <p>Sorry, the Center is closed in observance of Christmas.</p>	<p>27</p> <p>Sorry, the Center is closed in observance of Christmas, 6:30 Euchre</p>	<p>28</p> <p>Sorry, the Center is closed in observance of Christmas 1:00 Bowling League*</p>	<p>29</p> <p>9:00 Swimming * 10:00 Chess 12:00 Bring your own lunch; group walk 12:15 Bridge 12:30 Knit & Crochet</p>	<p>30</p> <p>9:00 Bingo 10:00 Wood Carving 10:30 Bring your family and walk the halls 12:00 Potluck lunch 1:00 Wii Fun</p>



Celebrate the Holidays!
A Community Lunch
and
Christmas Sing-Along

Monday
December 19, 2011
12:00 p.m. Lunch
1:00 p.m. Community Sing

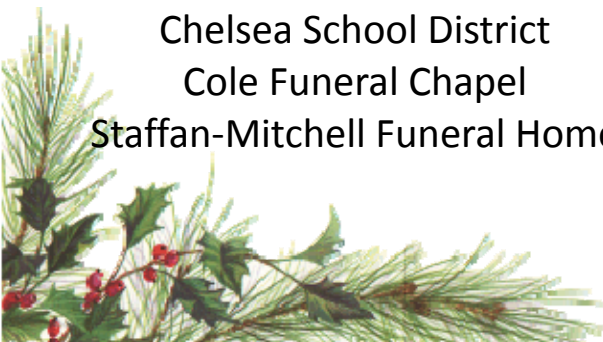
Led by Angelo Angelocci and Jack Merkel
Accompanied by Kathy West

~~~~~

**Please call 734-475-9242 to  
make your reservations by  
December 9, 2011**

**Thank You**  
**To our Sponsors and Supporters!**

Chelsea School District  
Cole Funeral Chapel  
Staffan-Mitchell Funeral Home



**Chelsea  
Senior Center**  
512 Washington Street  
Chelsea, MI 48118  
734-475-9242  
[www.chelseaseniors.org](http://www.chelseaseniors.org)

Membership dues are **\$25 per person** for the calendar year of 2012. Additional donations can be made at the same time. **Please make checks payable to Chelsea Senior Center.**

**\$25 Basic Membership** (monthly newsletter, discounted rates for programs and travel)

**\$50 Silver Membership** (benefits above plus quarterly "donuts for donors" event)

**\$100 Gold Membership**

(benefits above plus invitations to all donor events)

**\$250 Club "You too will be 50"**

(membership for a couple, benefits above plus recognition in the annual report)

Donations beyond the \$25 membership are tax deductible to the extent of the law.

|                                                         |                                                         |
|---------------------------------------------------------|---------------------------------------------------------|
| Your Name: _____                                        | Spouse's Name: _____                                    |
| Date of Birth: _____                                    | Date of Birth: _____                                    |
| Previous Occupation: _____                              | Previous Occupation: _____                              |
| Are you interested in volunteering at the center? _____ | Are you interested in volunteering at the center? _____ |
| Hobbies/interests: _____                                | Hobbies/interests: _____                                |

Address: \_\_\_\_\_

City: \_\_\_\_\_ State: \_\_\_\_\_ Zip: \_\_\_\_\_

Home Phone: \_\_\_\_\_ Cell Phone: \_\_\_\_\_

**PHOTO RELEASE:** I give permission to the Chelsea Senior Center to use my photo for the purposes of marketing and publicity. **Please Initial:** You: \_\_\_\_\_ Your Spouse: \_\_\_\_\_

Alternate Mailing Address: \_\_\_\_\_

Months to send newsletter to alternate address: \_\_\_\_\_

|                                                                                                                                                                                                |
|------------------------------------------------------------------------------------------------------------------------------------------------------------------------------------------------|
| <p><b>NEWSLETTER DELIVERY:</b></p> <p><input type="checkbox"/> Please e-mail the newsletter to me. E-mail address: _____</p> <p><input type="checkbox"/> Please mail to the address above.</p> |
|------------------------------------------------------------------------------------------------------------------------------------------------------------------------------------------------|

**EMERGENCY INFORMATION:** This information is kept strictly confidential.

Emergency Contact: \_\_\_\_\_ Relation: \_\_\_\_\_



Home Phone: \_\_\_\_\_ Cell Phone: \_\_\_\_\_

Medical conditions we should be aware of:

You: \_\_\_\_\_ Spouse: \_\_\_\_\_

\_\_\_\_\_

|                      |                    |
|----------------------|--------------------|
| For Office Use Only: |                    |
| Membership # _____   | Membership # _____ |
| Date Received: _____ | Paid: \$ _____     |



## Adult Learners Institute of Chelsea Michigan, Inc.

We are about life-long Learning

ALI is a non-profit organization. We offer a series of non-credit mini-classes; many are conducted in cooperation with Washtenaw Community College.

Phone: 734-433-1000, ext 7358  
809 W. Middle St., Chelsea, MI 48118

For more complete information visit:  
[www.AdultLearnersInstitute.org](http://www.AdultLearnersInstitute.org)

## MERRILLAT FINANCIAL GROUP

The educated approach to financial decisions.

Bryan K. Merillat, MBA, ChFC

Retirement Planning Strategies  
Estate Planning Strategies

Employee Benefits  
Executive Compensation

300 N. Main, Ste #3  
Chelsea, MI 48118

Phone: (734) 433-4001  
Fax: (734) 433-4002

[www.bryanmerillat.com](http://www.bryanmerillat.com)

[bryan.merillat@axa-advisors.com](mailto:bryan.merillat@axa-advisors.com)



## CARE RESPONSE

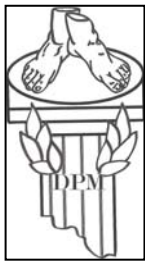
Providing in-home health care

- Companionship
- Personal Care
- Rehabilitation

[www.CareResponse.com](http://www.CareResponse.com)

# 734.662.2207

Owned and Operated by Registered Nurses



## Kleanthous Family Foot Clinic, P.C.

James Kleo Kleanthous, D.P.M.

Podiatric Physician & Surgeon

636 N. Main St., Ste. 100  
Chelsea, MI

### 433-2397



## Chelsea Chiropractic Center

Phone: (734) 475-2932 Fax: (734) 475-1885  
[drjimduncan@hotmail.com](mailto:drjimduncan@hotmail.com)

James G. Duncan II, D.C.

901 Taylor Street, Suite C • Chelsea, MI 48118



# LIVING Large

## Assisted Living Apartments

NO ENTRY FEES

Spacious, private apartments with services you'll love.

## Adult Day Services

*The Maples Club*

Monday — Friday, \$12/Hr.

Offering a variety of daily programs that enrich lives.

Respite Care \$165—\$211/day

A short-term stay in a beautifully furnished apartment, with the extraordinary care and services your loved one needs.

- Assistance for caregivers when it's needed
- A great way to experience what Assisted Living has to offer for a future move

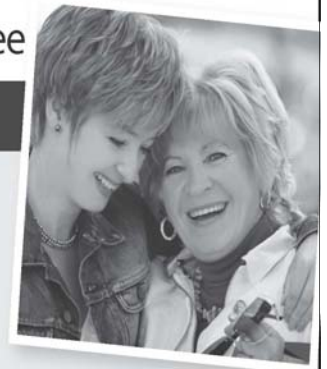


(734) 475-4111 | [www.silvermaples.org](http://www.silvermaples.org)

## Active, Affordable, Worry-Free

## Live Life at The Pines

These are just a few of the perks of living at The Pines Senior Apartments in Chelsea. Relax and leave the hassles to us as you enjoy a peaceful living environment at this community for adults 55 and older.



Beautiful one bedroom apartments are available now!



- Spacious and well-appointed
- Full kitchens
- Individual heating and air conditioning
- Washer and dryer in each unit
- Private patio or balcony
- Lush green spaces

To learn more about The Pines contact:  
Kristy Collins  
734-433-9130 || [chelseapines@aol.com](mailto:chelseapines@aol.com)  
325 Wilkinson Street, Chelsea, MI 48118



# Come Travel with Us!



Adult travelers of any age are invited to enjoy Chelsea Seniors' escorted trips

## Extended Trips

Flyers for extended trips available at the Center or online at [www.chelseaseniors.org/travel](http://www.chelseaseniors.org/travel). Call or visit us for additional information.

### Montréal, Quebec City & Ottawa

May 14 thru 19 Cost: \$1499 double (\$1359 triple)

Enjoy romantic rail travel from Windsor with stays in Montreal, Quebec City accommodations at the Fairmont Le Chateau on the St. Lawrence River and sightseeing in Ottawa. \$100 deposit, balance due April 1, 2012.



### Western National Parks

August 5 thru 15

Cost: \$2,999 double (\$2,749 triple) Deposit of \$250 at registration, balance due June 10th. Insurance \$150

Visit our own "Wonders of the World". Roundtrip air to Denver, 10 nights lodging with breakfasts, 1 lunch, 5 dinners. Tours of Western National Parks include Arches, Canyonlands, Salt Lake City, Jackson Hole, Grand Tetons, Yellowstone, Mt. Rushmore and more.



### British Landscapes

September 27 thru October 6

Cost: \$3,399 double (\$3,369 triple), book by March '12 Don't miss this opportunity to taste and see the best of England, Scotland and Wales. See Big Ben, Stonehenge, the Tower of London and more. Stay at Ruthin Castle and in Shakespeare's Stratford-Upon-Avon.

## Day Trips

### Firekeepers Casino Trip

Tuesday, January 17; depart 9:00 a.m.

Cost: \$27 (return of \$20 to play, \$5 for food)

Please provide players number when reserving your spot. Treat yourself to a one day getaway this January!



### Donny & Marie: Christmas @ Fox Theatre

Saturday, Dec 3; depart 1:15 p.m., return 7:30 p.m.

Cost: \$78 members/\$83 non-members Wait list only.

### Detroit Symphony Orchestra—Gershwin

Friday, Jan 13; depart at 8:45 a.m., return 2:00 p.m.

Cost: \$71 members/\$76 non-members

George Gershwin's music will fill Orchestra Hall. You'll enjoy all time favorites — great parts of Gershwin's American Songbook. Lunch extra after concert. Seating is limited. Don't miss out.



### "Nunset Boulevard" at Meadow Brook Theatre

Wednesday, Jan 25; depart 9:30 a.m., return 5:30 p.m.

Cost: \$76 members/\$81 non-members (includes lunch)

A special treat as we enjoy a musical comedy about the adventures of nuns who travel to California. Lunch in the elegant Meadow Brook Hall.

### D I A —Rembrandt and the Face of Jesus

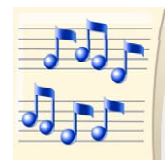
Thursday, Feb 9; depart 8:30 a.m., return 3:00 p.m.

Cost: \$45 members/\$50 non-members

Join us for this special exhibit and see how Rembrandt broke the convention of showing Jesus as a divine, perfect figure by portraying him as a compassionate, complex human being.

### South Pacific at the Fox Theater

Save the date: Saturday, March 3, 2012



Payment or deposit is due at registration. Only those people who pay when registering for a trip are guaranteed a seat. Price includes gratuities for driver. Refund Policy: Travelers will be responsible for the cost of the trip. If you must cancel, you may find your own replacement or call us to see if we have a wait list. If a cancellation is made prior to the final payment due date, a full refund, less \$5.00 handling fee, will be provided. Members are encouraged to purchase insurance.

Chelsea Senior Citizens Activities Center  
512 Washington Street  
Chelsea, MI 48118

Trinh Pifer, Executive Director  
Kay Heller, Administrative Assistant

Nonprofit Org.  
U.S. Postage  
PAID  
Chelsea, Mich.  
Permit No. 21

December 2011

*In Memoriam: Patricia Bowerman, Violet Becker, Jane Schairer, Terry Wesner, Bill Lutz, Margie Hill*



Our mission is to promote, encourage, and organize activities that address the physical, social, and emotional concerns of Chelsea area senior citizens and their families.

**Hours of Operation** — Chelsea Senior Center is open Monday thru Friday from 9 a.m. to 3 p.m. Call us at 734-475-9242 or email to [chelseaseniors@aol.com](mailto:chelseaseniors@aol.com)

**Travel at a Glance . . .**



- ◆ Texas Tenor Christmas Show — November 29
- ◆ Donny & Marie Christmas Show — December 3
- ◆ DSO: Gershwin — January 13, 2012
- ◆ Firekeeper's Casino Trip — January 17, 2012
- ◆ Nunset Boulevard Musical — January 25, 2012
- ◆ California Coast — Feb 1 thru 7, 2012
- ◆ DIA Rembrandt "Face of Jesus" — Feb 9, 2012
- ◆ South Pacific — March 3, 2012
- ◆ Montréal & Quebec City — May 14 thru 19
- ◆ Western National Parks — August 5 thru 15
- ◆ British Landscapes — Sept 27 thru Oct 6, 2012

*Chelsea Senior Center is supported by numerous donations, City of Chelsea, Chelsea United Way, Chelsea Community Foundation (an affiliate fund of the Community Foundation for Southeast Michigan), Chelsea Kiwanis, Chelsea Lions, Chelsea Pharmacy, Chelsea Retirement Community, Cole Funeral Chapel, Dexter Township, Silver Maples, Staffan Mitchell Funeral Home, Chelsea Area Garden Club, Women's Club of Chelsea, And the Members and Board of the Chelsea Senior Center. The Chelsea Senior Center complies with the terms and regulations of the Title V of the Civil Rights Act of 1964 as amended in Section 504 of the Social Rehabilitation Act of 1973 and is an equal opportunity employer. Reasonable accommodations will be provided upon notification or request.*